

3. COMBINED TRANSFORMERS Support type



3. COMBINED TRANSFORMERS > Support type

SUPPORT TYPE

Combine instrument transformers contain a current transformer and a voltage transformer within a single resin body with an external metallic coating.

RANGE

- › Insulation level up to 24 kV.
- › Rated primary currents up to 200 A.
- › Secondary currents: 1 and 5 A.
- › Secondary voltages:
Measurement - 100:√3, 110:√3, 120:√3; 110, 115, 120.
Residual - 100:3, 110:3, 120:3.
- › Frequencies: 50 Hz, 60 Hz.

APPLICATIONS

- › Metering points in underground distribution systems.

ADVANTAGES

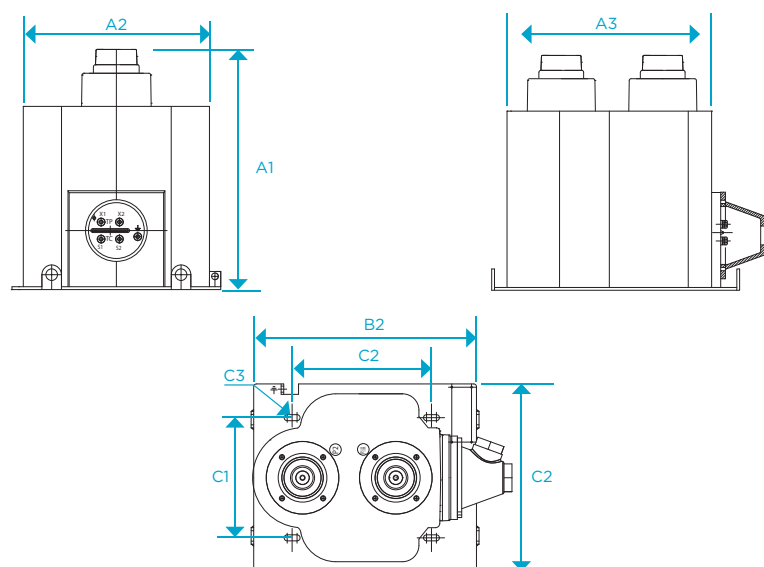
- › Primary connection with cable bushing as per IEEE standards. Can be designed based on customer specifications.
- › Waterproof metallic secondary terminal cover.
- › Stainless steel screws, bolts and nuts available.
- › Less space needed in the installation.
- › Savings in structures, supports, connectors, etc.
- › Reduced installation time.



› Model KCB

› KCB-17. 17.5 kV Combined transformers installed in a metering unit.

DIMENSIONS



Electrical characteristics							
Model	Highest voltage (kV)	Rated insulation level		Maximum primary current (A)	Short-circuit current I_{th}		Maximum number of cores
		Power frequency (kV)	Lightning impulse (BIL) (kVp)		I_{th} (kA/1s)	I_{din} (kA)	
KCB-17	17.5	38	95	200	20	$2.5 \times I_{th}$	1
KCB-24	24	50	125	200	20	$2.5 \times I_{th}$	1

Subject to technical change.

Dimensions and weights										
Model	Dimensions (mm)				Base (mm)		Mounting (mm)			Weight (kg)
	Height (A1)	Width (A2)	Length (A3)	Inner diameter (A4)	Width (B1)	Length (B2)	Width (C1)	Length (C2)	Hole diameter (C3)	
KCB-17	360	305	340	-	320	370	219	254	11	53
KCB-24	360	305	340	-	320	370	219	254	11	53

Standard 3/8" threaded terminals for receiving female connection.
1/4" standard threaded secondary terminals housed in water tight metal cases. Steel earthing terminal 7 mm in diameter.
Approximate dimensions and weights.